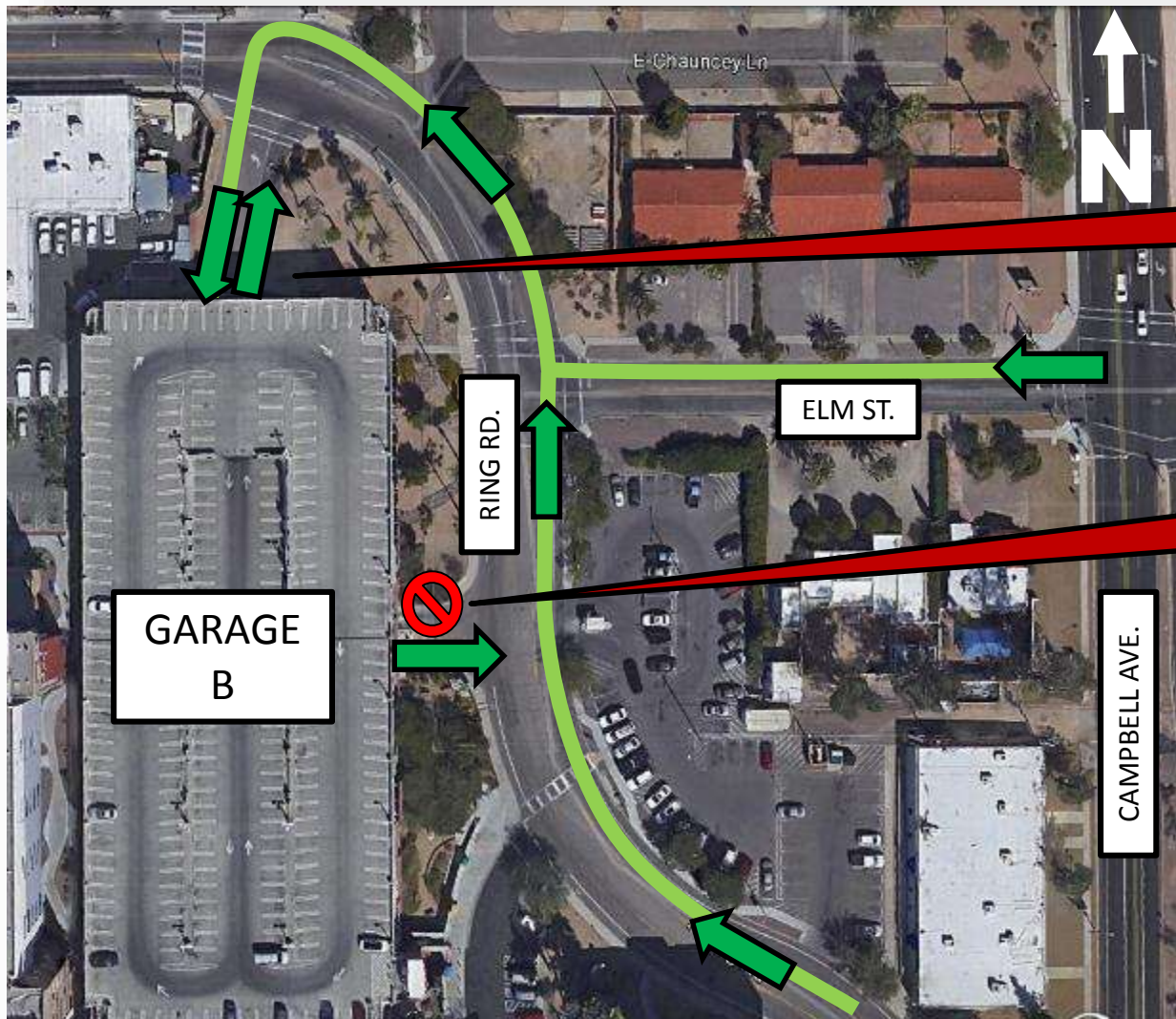


BUMCT EXPANSION PROJECT WEEKLY NOTICE

PARKING GARAGE B LEVEL 1 WORK DEC 28TH THROUGH DEC 31ST 2015



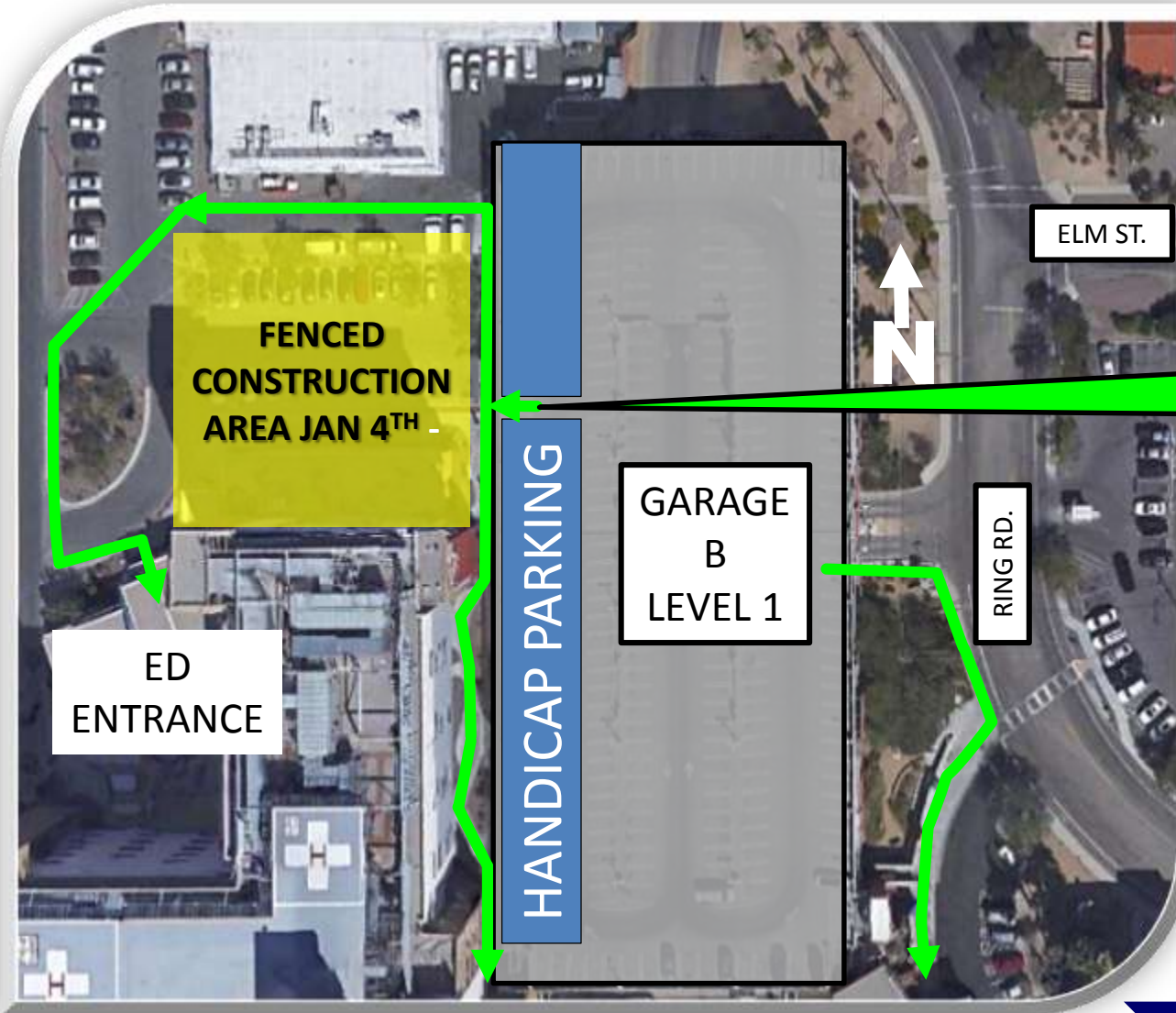
**USE NORTH
ENTRANCE ONLY**

**EAST ENTRANCE WILL
BE CLOSED**

**PARKING AVAILABLE
ON LEVELS 2-4 AND
IN PARKING GARAGE
C**

BUMCT EXPANSION PROJECT WEEKLY NOTICE

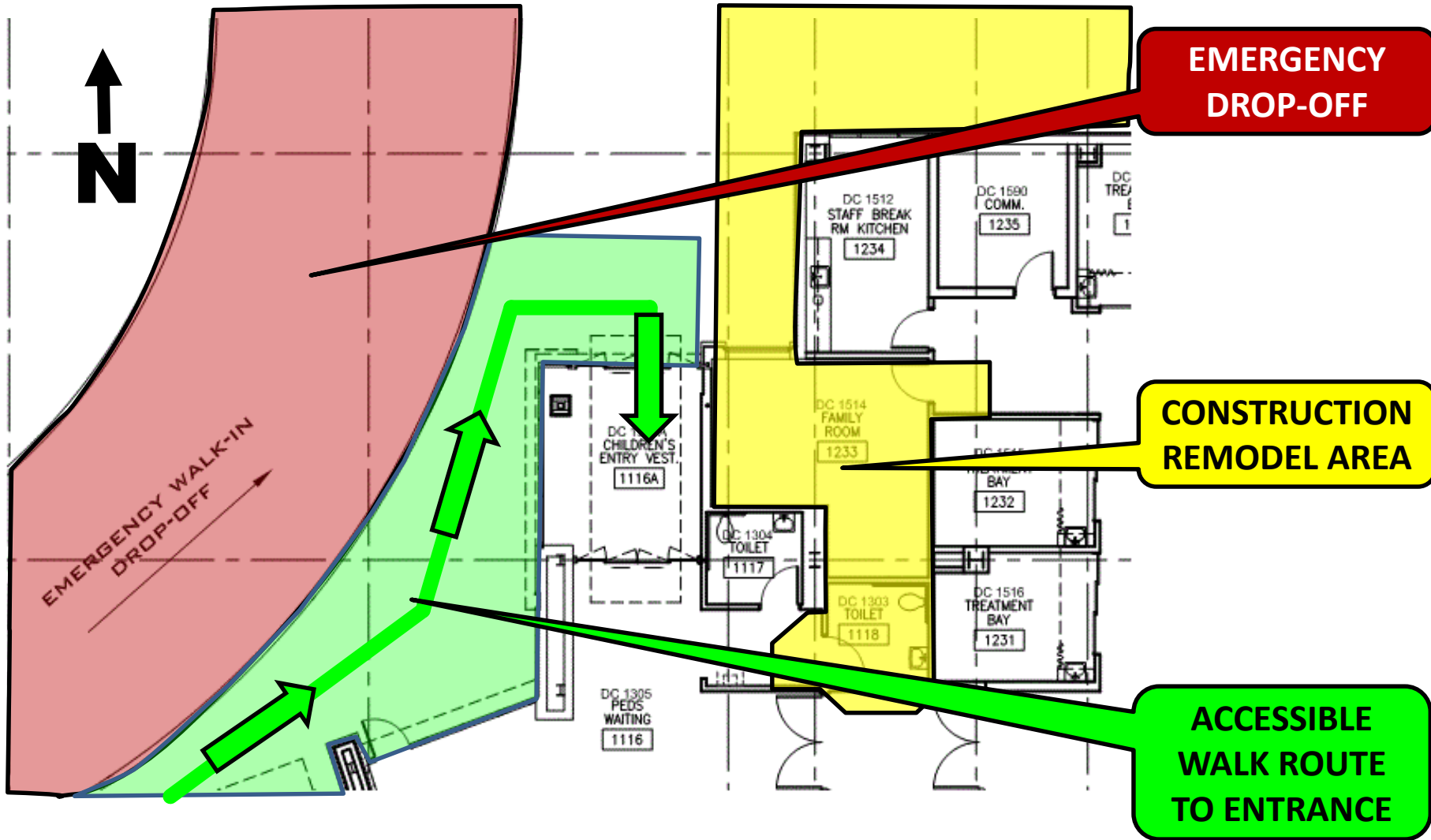
PERMANENT GARAGE B HANDICAP PARKING STARTING JAN 1ST 2016



ACCESSIBLE
WALKWAY ROUTES TO
ENTRANCES

BUMCT EXPANSION PROJECT WEEKLY NOTICE

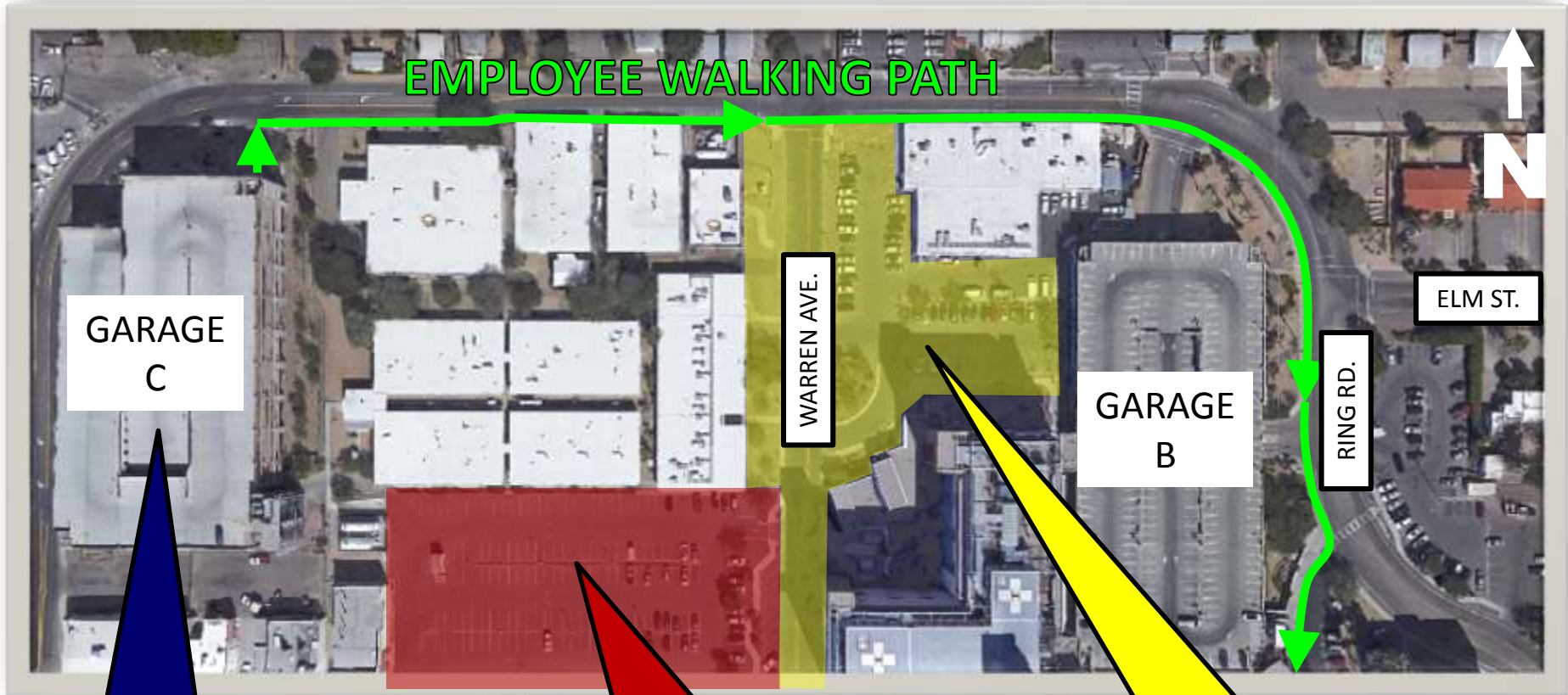
FUTURE ED AMBULANCE ENTRANCE REMODEL JAN 4TH THROUGH MAR 4TH 2016



Issued: 12/21/2015

BUMCT EXPANSION PROJECT WEEKLY NOTICE

LOT F CLOSURE AND NEW WALKING PATH STARTING JAN 4TH 2016

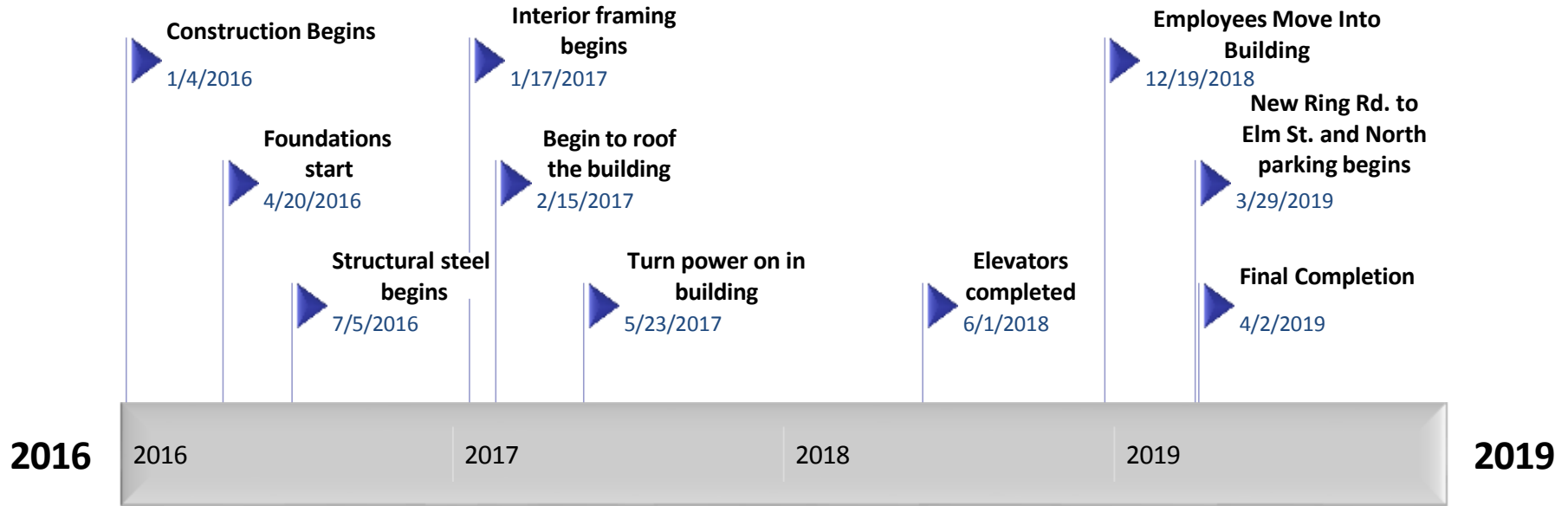


EMPLOYEE PARKING

**LOT F WILL BE CLOSED
PERMANENTLY FOR NEW
HOSPITAL TOWER**

**ED DROP-OFF ONLY. NO
EMPLOYEE ACCESS OR
PARKING**

CONSTRUCTION MILESTONES



Construction begins on **1/4/2016!!!**

PROJECT STATUS

Final hospital will be 9 stories tall.

PROJECT FACTS

Banner:
mark.ostrand@bannerhealth.com | (520) 694-4076
Sundt | DPR:
 (520) 268-9575
Emergency:
 Banner Security | (520) 694-6533

CONTACT INFO